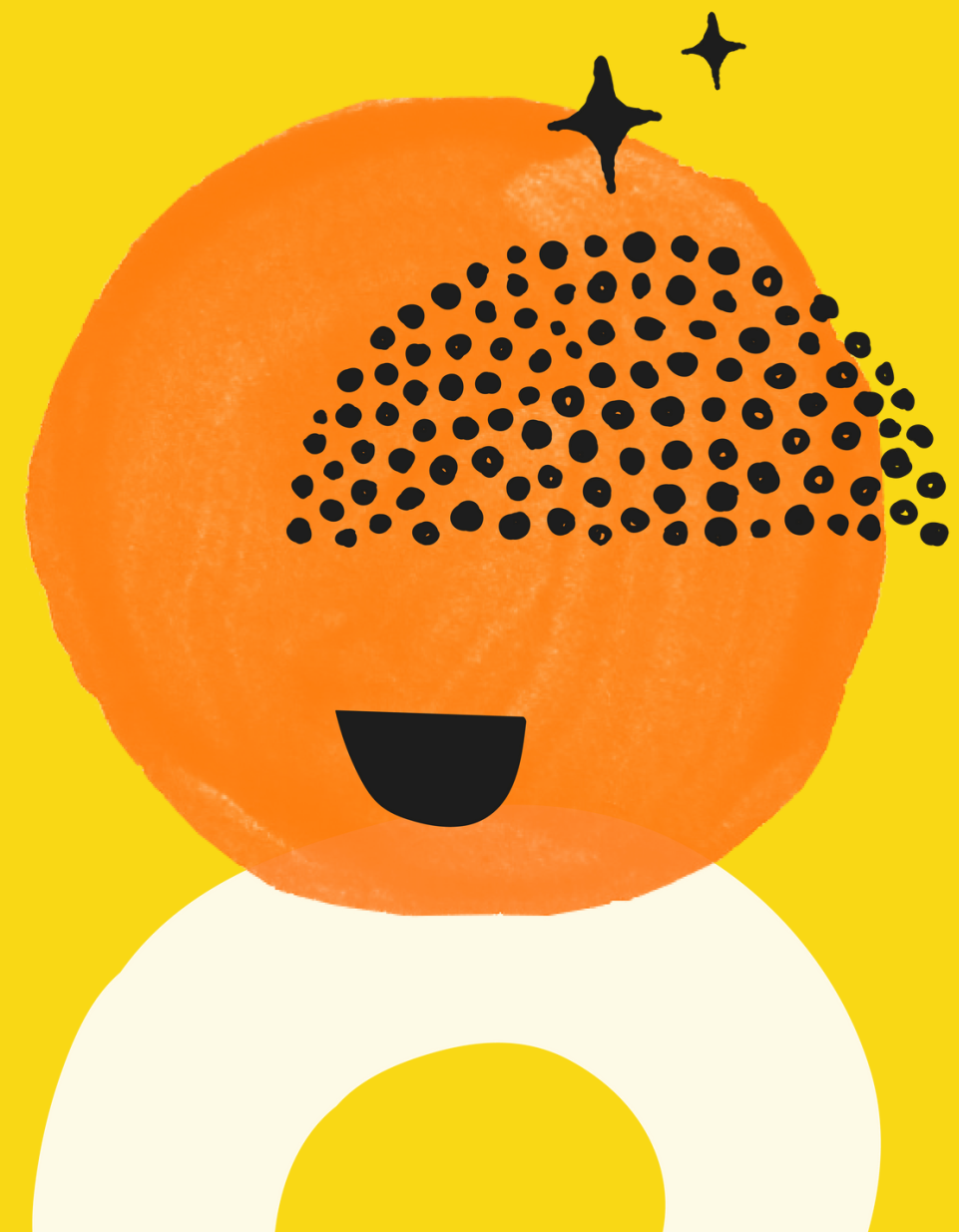


Stribe

Oh, *Hey!*



Introduction

- ④ What is Scribe?
- ④ Why are we introducing Scribe?
- ④ What can you use Scribe for?
- ④ Is Scribe Anonymous?



What is *Stribe*?

Stribe helps teams be heard, taking their small insights day by day leading to real change that matters.

Stribe is an anonymous employee engagement tool. Stribe's employee voice, pulse surveys and shout-outs help your voice be heard.





Why are we introducing *Stribe*?

With Stribe, everyone is heard. When people are heard, teams are happy. You can use Stribe to voice your thoughts, worries, and ideas at any time, and any place.

This will:

- ⌚ Help us understand what you're thinking and feeling
- ⌚ Give us quicker and more regular feedback on key areas of employee engagement such as wellbeing, mental health and job satisfaction
 - ⌚ Help us create a great workplace for you
- ⌚ Help us understand workplace concerns earlier, and resolve them sooner





What can you use

Stripe **for?**



A trusted place to *talk*

You can use Stribe to start an anonymous conversation with us at any time. Use Stribe to talk, and voice your thoughts, worries and ideas.



Make your voice *heard*

We'll use Scribe to send you regular pulse surveys to answer. These will help us better understand how you're thinking and feeling.



Celebrate the moments that *matter*

Stribe is here to help you celebrate every success with your colleagues - no matter how big or small!

Use Stribe to send shout-outs to recognise colleagues for the big things, the little things, and everything in between!



A resource hub for *you*

A resource hub for employees, that makes it easy for everyone to access the information they need.



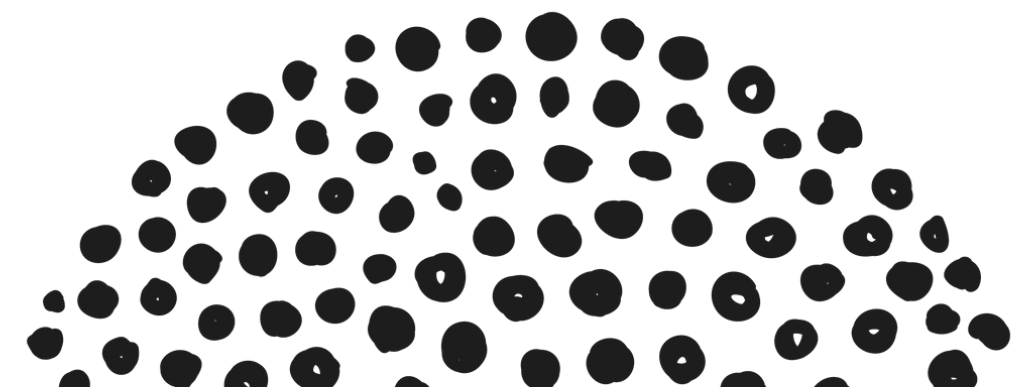


Is Stribe really *anonymous*?

Stribe's system is fully anonymous, and only the employee will ever be able to reveal their own identity.

The only area of the tool that isn't anonymous is shout-outs, but even then, you can make a shout-out private if you would prefer.

Their stance on anonymity protects employees using the system, and creates an environment of trust that means that the system is used to its full potential, and that messages and feedback are open, honest and detailed.



What's next?

- 🌀 Keep an eye out for your login information! We'll be sending it out very soon.
- 🌀 Break the ice! Send a shout-out or message when you first log in.
- 🌀 Download the app. It's a great way to keep up to date with everything on Stribe when you're on the go.



Stribe

See you there!

